

The rotating demolition tools of the Dedicated Demolition Line have been developed for primary and secondary demolition. Their jaws are designed to each application area within a demolition job site: Combi Shear DRC, Demolition Shear DRD or Pulveriser DRP. The patented DemaPower cylinder concept provides up to 20% more power and obviously quicker cycle times.

- ▶ Maximized working speed with the DemaPower cylinder and robust pin suspension, four chamber technique and speed valve.
- ▶ Rotation with additional oil passage.
- ▶ Twin rotation motors for extra rotation power.
- ▶ Swing bearing double pivoted.
- ▶ Rotation circuit filters.
- ▶ Teeth, shrouds and cutting blades exchangeable.
- ▶ Excellent speed/ power to weight ratio.
- ▶ DRP: exchangeable ground tooth-plate.



DRD-25

Rotating Combi Shears DRC

Type	Operating weight	Weight	Jaw width A	Jaw depth E	Lower jaw width B	Upper jaw width C	Height D	Length blades	Closing force*
	(t)	(kg)	(mm)	(mm)	(mm)	(mm)	(mm)	(mm)	(t)
DRC-25	18 - 25	1880	785	800	390	90	1995	400	85/120
DRC-30	22 - 35	2440	875	900	455	100	2150	400	100/150
DRC-45	32 - 50	3060	990	975	470	100	2365	500	130/185

Rotating Demolition Shears DRD

Type	Operating weight	Weight	Jaw width A	Jaw depth E	Lower jaw width B	Upper jaw width C	Height D	Length blades	Closing force*
	(t)	(kg)	(mm)	(mm)	(mm)	(mm)	(mm)	(mm)	(t)
DRD-25	18 - 25	1905	825	800	390	90	2035	200	90/145
DRD-30	22 - 35	2435	870	885	450	100	2155	200	105/160
DRD-45	32 - 50	3085	990	945	470	100	2360	200	130/195

Rotating Pulveriser DRP

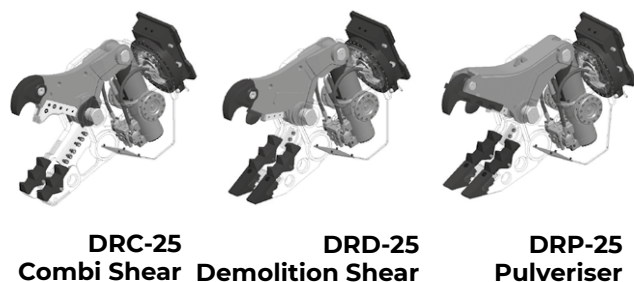
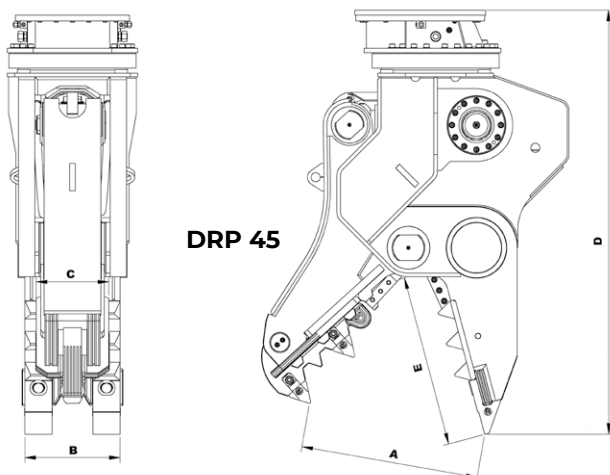
Type	Operating weight	Weight	Jaw width A	Jaw depth E	Lower jaw width B	Upper jaw width C	Height D	Length blades	Closing force*
	(t)	(kg)	(mm)	(mm)	(mm)	(mm)	(mm)	(mm)	(t)
DRP-25	18 - 25	1910	790	800	390	325	1980	200	85/130
DRP-30	22 - 35	2410	860	885	450	350	2155	200	100/150
DRP-45	32 - 50	3125	980	945	470	400	2360	200	130/185

* closing force measured at front tooth / splitting tooth

Hydraulics

Type	Open / close		Rotation		Cycle times (open / close) (sec)
	Pressure max. (bar)	Flow (l/min)	Pressure max. (bar)	Flow (l/min)	
DRC-25 / DRD-25 / DRP-25	380	120 - max. 200	140	40 - max. 60	2,0 / 2,3
DRC-30 / DRD-30 / DRP-30	380	150 - max. 250	140	40 - max. 60	2,0 / 2,5
DRC-45 / DRD-45 / DRP-45	380	200 - max. 300	140	40 - max. 60	2,0 / 2,9

Technical drawing



The rotating demolition tools of the Dedicated Demolition Line have been developed for primary and secondary demolition. Their jaws are designed to each application area within a demolition job site: Combi Shear DRC, Demolition Shear DRD or Pulveriser DRP. The patented DemaPower cylinder concept provides up to 20% more power and obviously quicker cycle times.

- ▶ Maximized working speed with the DemaPower cylinder and robust pin suspension, four chamber technique and speed valve.
- ▶ Rotation with additional oil passage.
- ▶ Twin rotation motors for **extra rotation power**.
- ▶ Swing bearing double pivoted.
- ▶ Rotation circuit filters.
- ▶ Teeth, shrouds and cutting blades exchangeable.
- ▶ Excellent speed/ power to weight ratio.
- ▶ DRP: exchangeable ground tooth-plate.



Rotating Combi Shears DLC

Type	Operating weight	Weight	Jaw opening A	Jaw depth E	Lower jaw width B	Upper jaw width C	Height D	Length blades	Closing force*
	(t)	(kg)	(mm)	(mm)	(mm)	(mm)	(mm)	(mm)	(t)
DRC-45	32 - 50	3060	990	975	470	100	2365	500	130/185

Rotating Demolition Shears DLD

Type	Operating weight	Weight	Jaw opening A	Jaw depth E	Lower jaw width B	Upper jaw width C	Height D	Length blades	Closing force*
	(t)	(kg)	(mm)	(mm)	(mm)	(mm)	(mm)	(mm)	(t)
DRD-45	32 - 50	3085	990	945	470	100	2360	200	130/195

Rotating Pulveriser DLP

Type	Operating weight	Weight	Jaw opening A	Jaw depth E	Lower jaw width B	Upper jaw width C	Height D	Length blades	Closing force*
	(t)	(kg)	(mm)	(mm)	(mm)	(mm)	(mm)	(mm)	(t)
DRP-45	32 - 50	3125	980	945	470	400	2360	200	130/185
DRP-60	45 - 65	4100	1150	1020	565	450	2550	250	150/205

* closing force measured at front tooth / splitting tooth

Hydraulics

Type	Open / close		Rotation		Cycle times (open / close) (sec)
	Pressure max. (bar)	Flow (l/min)	Pressure max. (bar)	Flow (l/min)	
DRC-45 / DRD-45 / DRP-45	380	200 - max. 300	140	40 - max. 60	2,0 / 2,9
DRP-60	380	300 - max. 400	140	40 - max. 60	2,0 / 2,8

Technical drawings

